

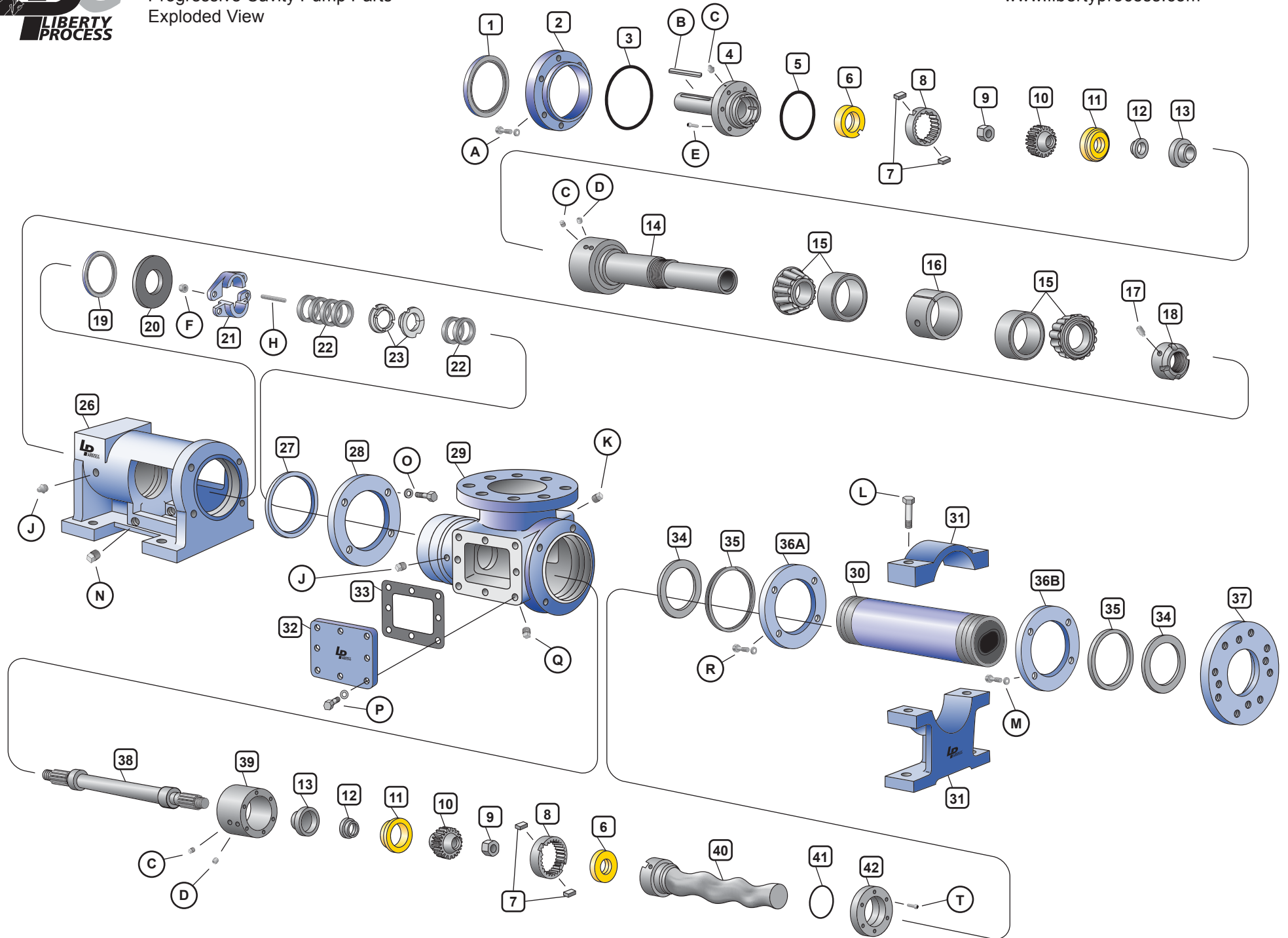


# MILLENNIUM SERIES

Progressive Cavity Pump Parts  
Exploded View

P: 847.640.7867 F: 847.640.7855  
2525 Clearbrook Drive Arlington Heights, IL 60005

[www.libertyprocess.com](http://www.libertyprocess.com)





# MILLENNIUM SERIES

Progressive Cavity Pump Parts  
Exploded View

## Pump Components

- |                            |                             |
|----------------------------|-----------------------------|
| 1. Radial Grease Seal      | 26. Bearing Housing         |
| 2. Bearing Cover Plate     | 27. Retaining Ring          |
| 3. O-Ring                  | 28. Clamp Ring              |
| 4. Drive Shaft Head        | 29. Suction Housing         |
| 5. O-Ring                  | 30. Stator                  |
| 6. Primary Thrust Plate    | 31. Stator Support          |
| 7. Key                     | 32. Inspection Plate        |
| 8. Ring Gear               | 33. Inspection Plate Gasket |
| 9. Lock Nut                | 34. Stator Gasket           |
| 10. Gear Ball              | 35. Spiral Retaining Ring   |
| 11. Secondary Thrust Plate | 36A. Stator Ring Clip       |
| 12. Seal Support           | 36B. Stator Clamp Ring      |
| 13. Gear Joint Seal        | 37. Discharge Flange        |
| 14. Drive Shaft            | 38. Connecting Rod          |
| 15. Tapered Roller Bearing | 39. Gear Joint Shell        |
| 16. Bearing Spacer         | 40. Rotor                   |
| 17. Bearing Lock Plug      | 41. O-Ring                  |
| 18. Bearing Lock Nut       | 42. Head Ring               |
| 19. Thrust Grease Seal     |                             |
| 20. Slinger Ring           |                             |
| 21. Packing Gland Half     |                             |
| 22. Packing                |                             |
| 23. Lantern Ring           |                             |

## Hardware

- |   |
|---|
| A. Hex Head Screw (with lock washer)        |
| B. Shaft Key                                |
| C. Flush Plug (stainless steel)             |
| D. Set Screw (with thread sealing compound) |
| E. Socket Head Screw                        |
| F. Hex Nut, Packing                         |
| H. Stud Packing                             |
| J. Zerk Fitting                             |
| K. Pipe Plug                                |
| L. Hex Head Bolt                            |
| M. Hex Head Screw (with lock washer)        |
| N. Pipe Plug                                |
| O. Hex Head Screw (with lock washer)        |
| P. Hex Head Screw (with lock washer)        |
| Q. Pipe Plug                                |
| R. Hex Head Screw (with lock washer)        |
| T. Socket Head Screw                        |