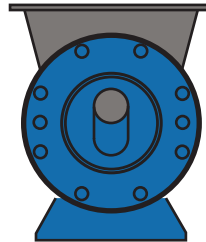
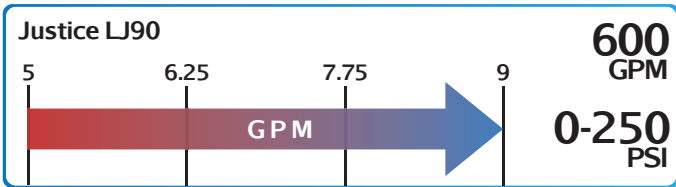
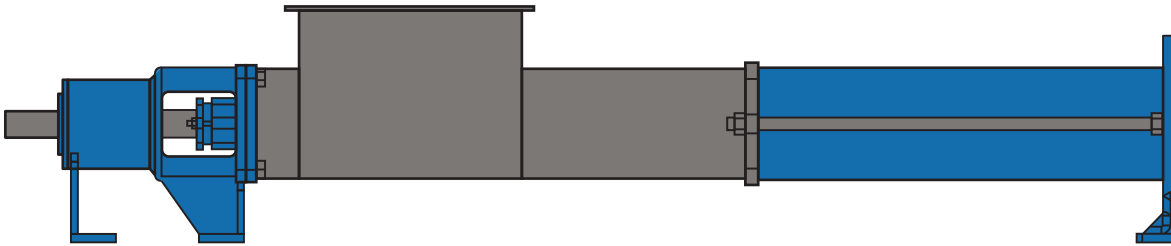




JUSTICE SERIES - LJ90

Progressive Cavity Hopper Pump



Features

- Large feed hopper
- Heavy-duty Welded Auger
- Hardened pinned-joint drive assembly
- Choice of Packing or Mechanical Seal
- 3-Stage Options are Available
- Choose between Steel or Stainless Steel

Materials

ROTORS: Chrome Plated Tool Steel or Stainless Steel

STATORS: Buna / Viton® / EPDM / Rubber

MOTOR: Up to 150 HP

INLET: 16" (482 x 391mm)

OUTLET: 8"

BASES: Stainless Steel Chrome Plated

Pump Description

The Justice LJ90 Series Open Hopper Progressive Cavity Pump represents an ideal pumping solution for viscous solutions and those with high solids contents for industrial wastewater. Flow rates of up to 600 GPM, 150 gallons per 100 revolutions at up to 250 PSI Oil are standard. The Justice Series integrates a heavy-duty auger mated to a rotor and stator for challenging pumping applications today.

The Justice LJ90 offers a rectangular feed hopper which easily handles your pumping medium, while the non-pulsating design produces a low-shear flow that conveys your medium along effectively. Solids in suspension of up to 50% are accommodated by design.

The modular system of the LJ90 Justice Series Open Hopper Progressive Cavity Pump has a hardened pinned-joint drive assembly, available in either steel or stainless steel. The pump also includes internal wetted components in either stainless or hardened tool steel with hard chrome plating for durability and long-life in abrasive pumping applications.

The LJ90 Justice Series are available in 1, 2, and 3 stage rotor and stators for applications with 85, 170, and 250 PSI discharge pressures. The stators are available in Buna Nitrile, Viton, EPDM and Natural Rubber. Standard seal design is a set of packing with a lantern ring and flush connections. Mechanical Seal options are available as well.

Contact a Liberty Process representative today for more information about the Justice Series for pumping viscous solutions. Liberty Justice Series LJ90 Progressive Cavity Pump Parts are also available.

Curves

[Click Links Below](#)

1-Stage
1LJ90

2-Stage
2LJ90

3-Stage
3LJ90

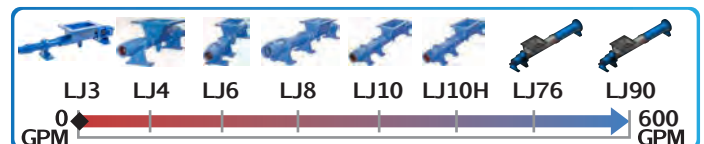
Drawings

[Click Links Below](#)

1-Stage
1LJ90

2-Stage
Coming
Soon

3-Stage
Coming
Soon



P: 847.640.7867 F: 847.640.7855
2525 Clearbrook Drive Arlington Heights, IL 60005

www.libertyprocess.com

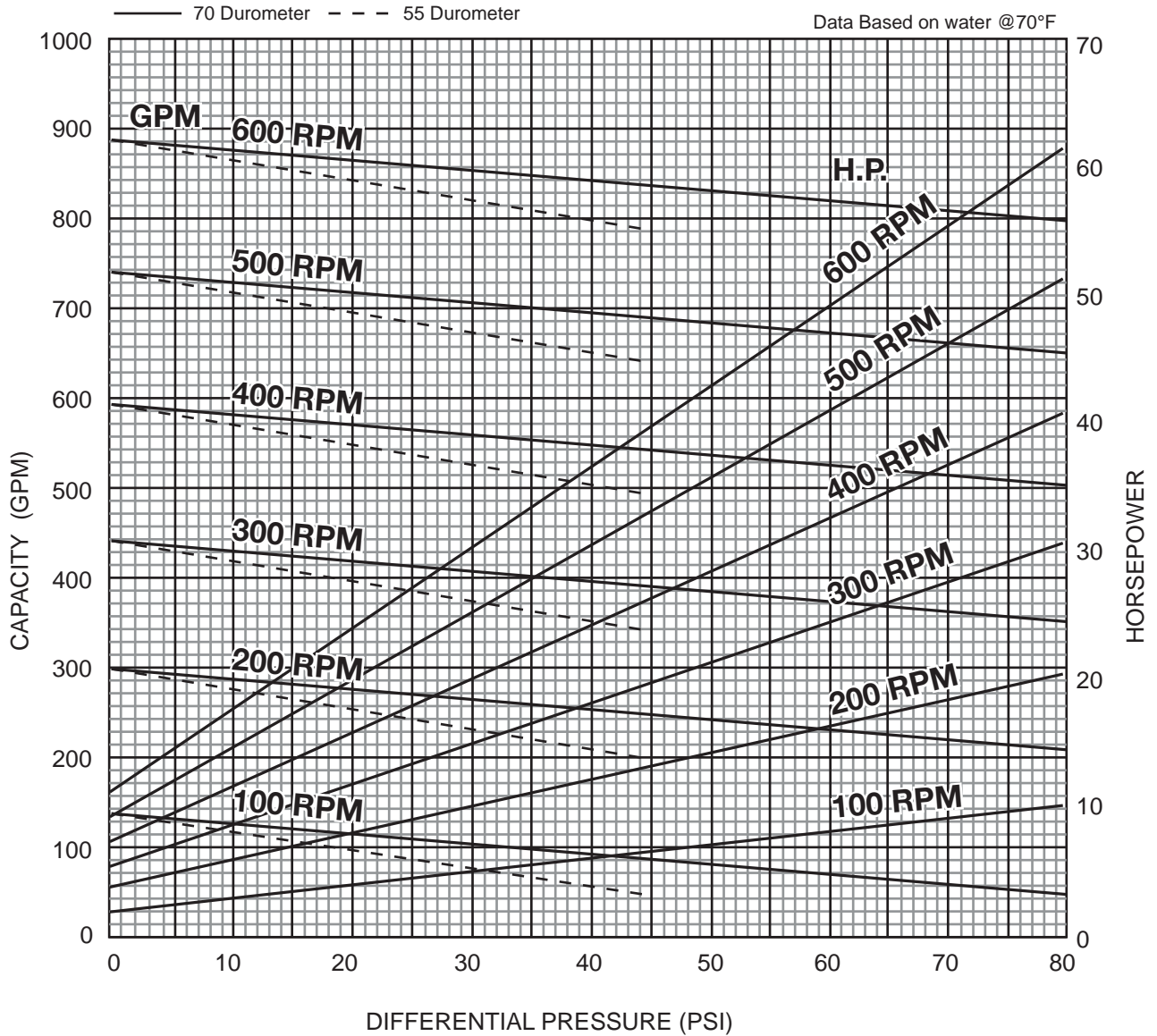


JUSTICE SERIES - 1LJ90

Progressive Cavity Pump

Performance Curves

RPM	200	400	600	800	1000	1200
NPSH REQ'D	X	X	X	X	X	X
MIN. HP	X	X	X	X	X	X



1 Stage Pump

[BACK TO TOP](#)

P: 847.640.7867 F: 847.640.7855
2525 Clearbrook Drive Arlington Heights, IL 60005

www.libertyprocess.com

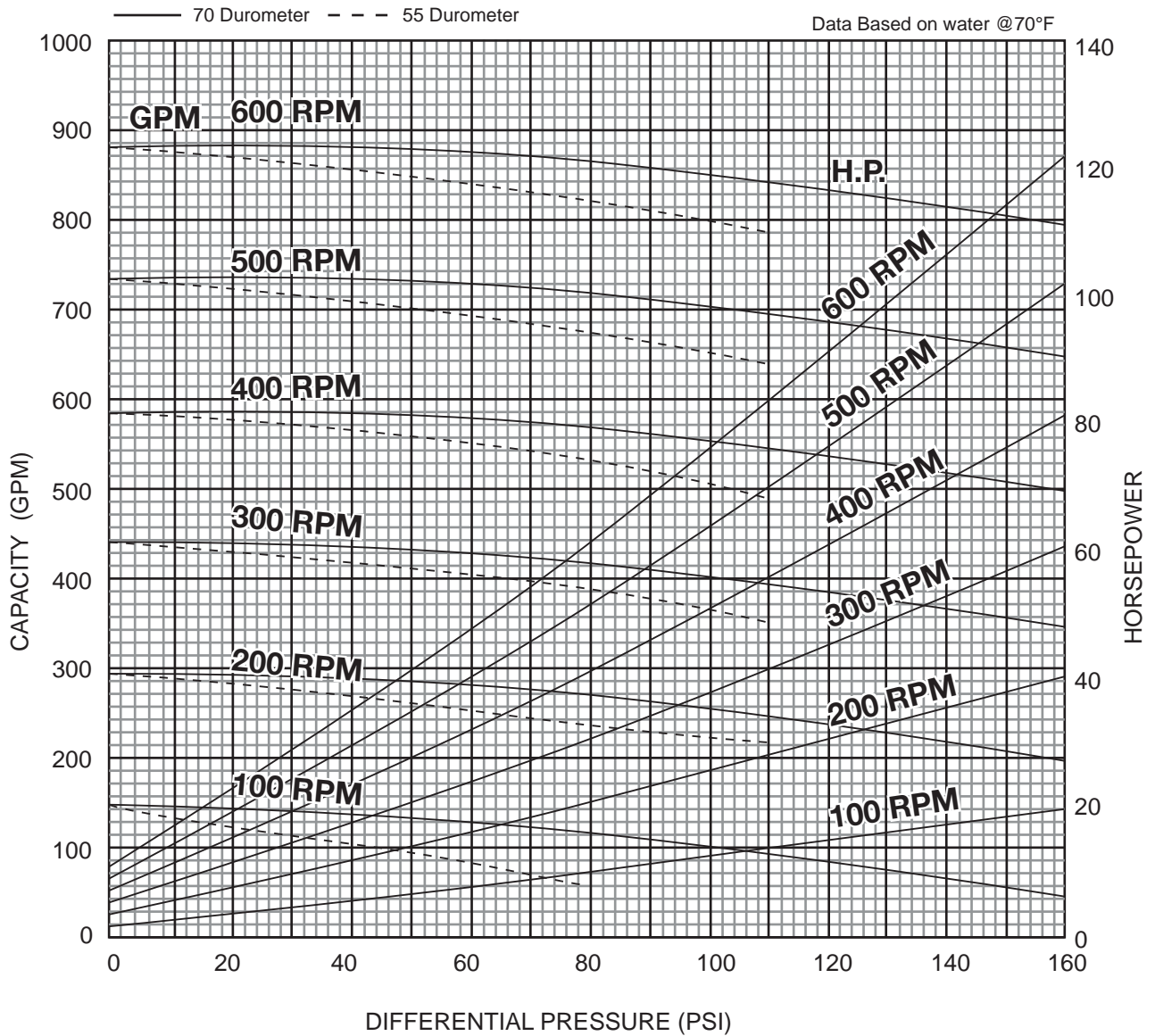


JUSTICE SERIES - 2LJ90

Progressive Cavity Pump

Performance Curves

RPM	200	400	600	800	1000	1200
NPSH REQ'D	X	X	X	X	X	X
MIN. HP	X	X	X	X	X	X



2 Stage Pump

[BACK TO TOP](#)

P: 847.640.7867 F: 847.640.7855
2525 Clearbrook Drive Arlington Heights, IL 60005

www.libertyprocess.com

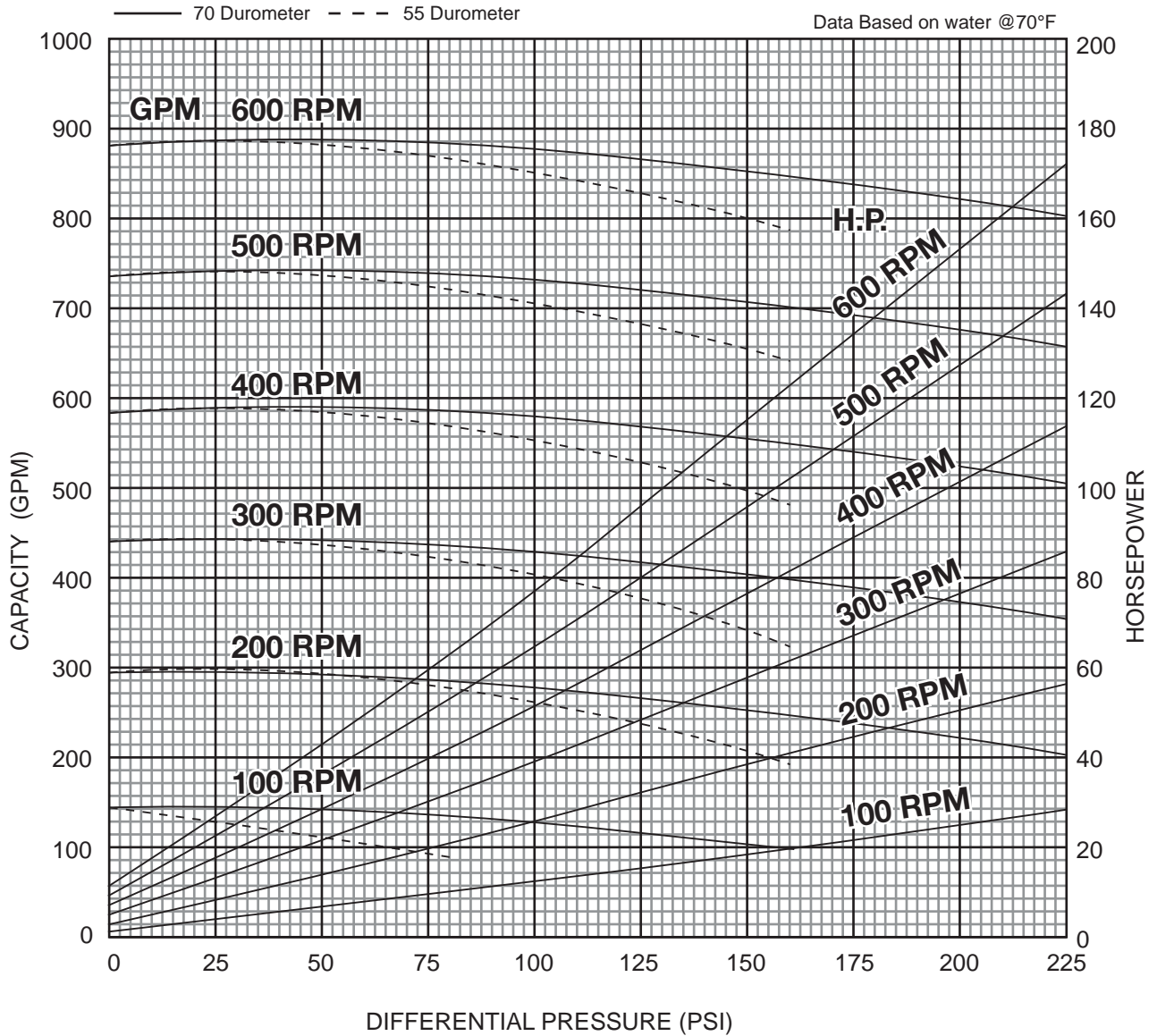


JUSTICE SERIES - 3LJ90

Progressive Cavity Pump

Performance Curves

RPM	200	400	600	800	1000	1200
NPSH REQ'D	X	X	X	X	X	X
MIN. HP	X	X	X	X	X	X



3 Stage Pump

BACK TO TOP

P: 847.640.7867 F: 847.640.7855
2525 Clearbrook Drive Arlington Heights, IL 60005

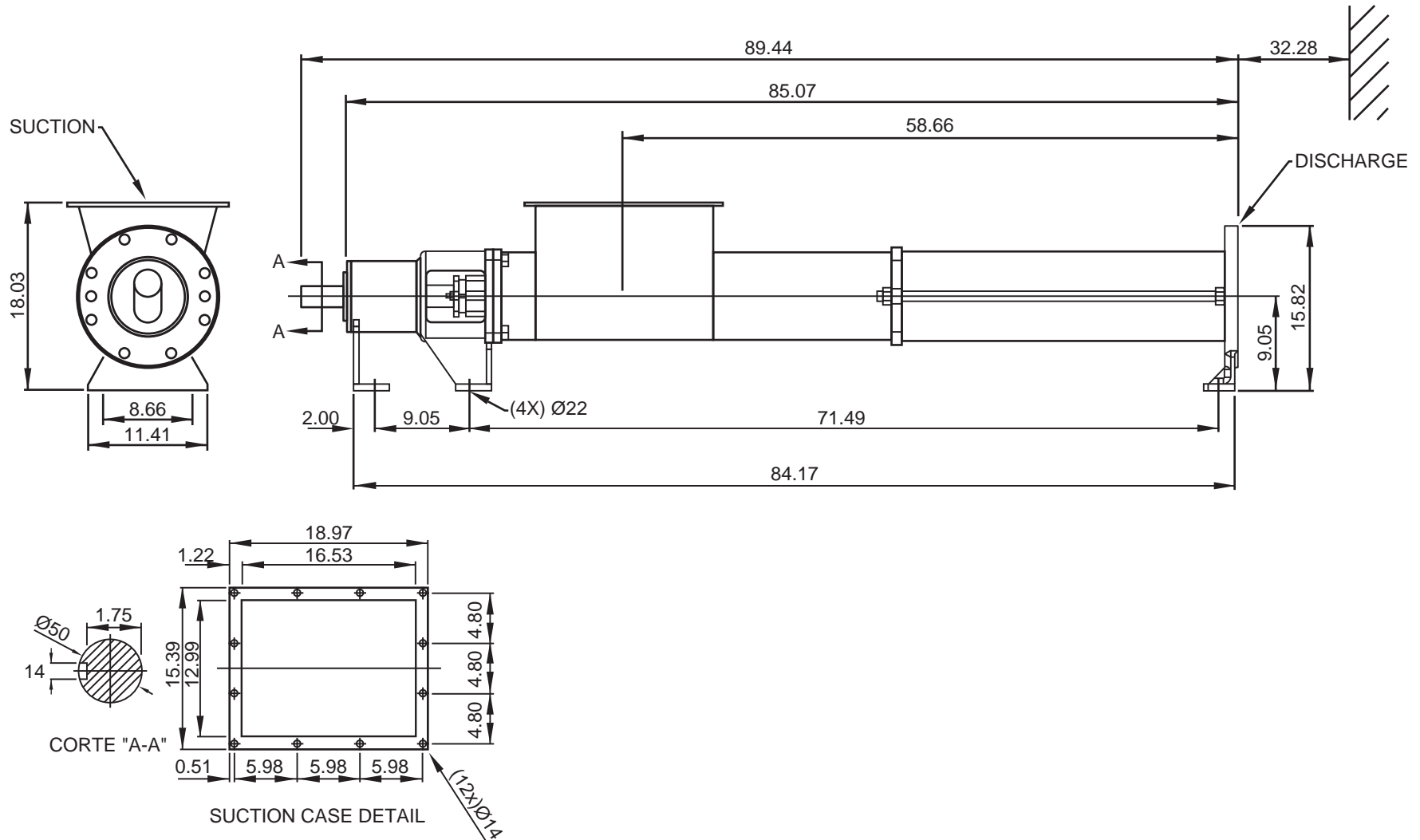
www.libertyprocess.com



JUSTICE SERIES - 1LJ90

Progressive Cavity Pump

Dimensional Drawings



BACK TO TOP

ALL DIMN: Inches

≈ lbs.

-

1 Stage Pump

P: 847.640.7867 F: 847.640.7855
2525 Clearbrook Drive Arlington Heights, IL 60005

www.libertyprocess.com