



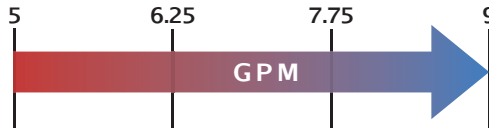
# JUSTICE SERIES - LJ4

Progressive Cavity Hopper Pump



Justice LJ4

5-9  
GPM



## Features

- Large Hopper
- Welded Auger
- Hardened Joints
- Packing or Mechanical Seal
- 3-Stage Options
- Steel or Stainless Steel

## Materials

**Rotor:** Tool or Stainless Steel - Chrome-Plated

**Stator:** Buna, Rubber, Viton™, EPDM

**Motor:** 1/2, 3/4, 1, 1.5, and 2 hp

**Inlet:** 11.75" x 7"

**Outlet:** 2"

**Bases:** Steel and Stainless Steel

## Pump Description

The Liberty LJ4 Justice Series Open Hopper Progressive Cavity Pump represents an ideal pumping solution for viscous solutions with high solids contents such as high-viscosity chemical transfer of liquids and sludge's at industrial facilities and other low-flowable pumping mediums. Flow rates of 2.02 GPM per 100 Revolutions (5 GPM to 9 GPM) at up to 225 PSI are standard through the range of the series. The Justice Series offers a design of a heavy-duty auger mated to a rotor and stator for the most difficult pumping applications available today.

The large rectangular feed hopper design easily accommodates your pumping medium while the non-pulsating design of the product produces a low-shear flow that conveys your medium along effortlessly. Solids in suspension of up to 50% are accommodated by the Auger design.

The modular design of the LJ4 Justice Series Open Hopper Progressive Cavity pump is a hardened pinned-joint drive assembly with a body available in steel or 316 stainless steel and internal wetted components in either stainless steel or hardened tool steel with hard chrome plating for long-life and durability in abrasive pumping applications.

Rotors and Stators for the LJ4 Justice Series are available in 1, 2, and 3 stages for applications with 75, 150, and 225 PSI discharge pressures with stators available in Buna Nitrile, Viton, EPDM and Natural Rubber. The standard seal design is a set of packing with a lantern ring and flush connections. Mechanical Seal options are readily available.

The Liberty LJ4 Progressive Cavity Pump parts are direct aftermarket replacements that dimensionally interchange with the Moyno™ J4 Series, and the Tarby™ TJ4 Series.\*

Contact a Liberty Process representative today!



## Curves

[Click Links Below](#)

1-Stage  
**1LJ4**

2-Stage  
**2LJ4**

3-Stage  
**3LJ4**

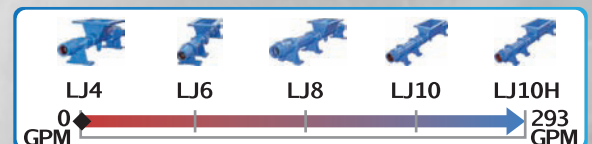


## Drawings

[Click Links Below](#)

1-Stage  
**1LJ4**

2-Stage  
**2LJ4**



P: 847.640.7867 F: 847.640.7855  
2525 Clearbrook Drive Arlington Heights, IL 60005

[www.libertyprocess.com](http://www.libertyprocess.com)

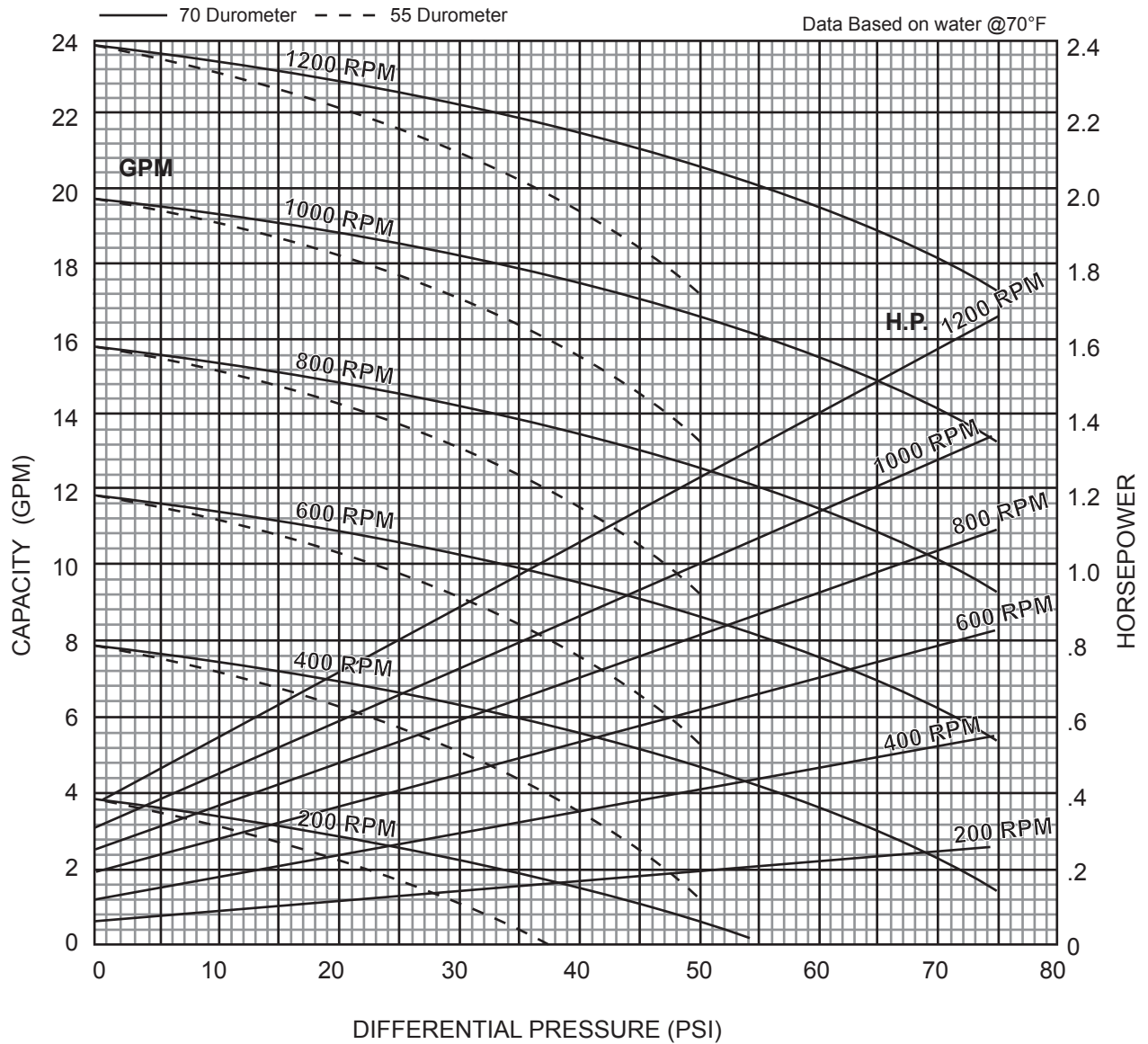


# JUSTICE SERIES - 1LJ4

Progressive Cavity Pump

Performance Curves

RPM	200	400	600	800	1000	1200
NPSH REQ'D	.9	1.7	2.6	3.4	4.8	6.7
MIN. HP	1/3	1/2	1/2	3/4	1	1



## 1 Stage Pump

[BACK TO TOP](#)

P: 847.640.7867 F: 847.640.7855  
2525 Clearbrook Drive Arlington Heights, IL 60005

[www.libertyprocess.com](http://www.libertyprocess.com)

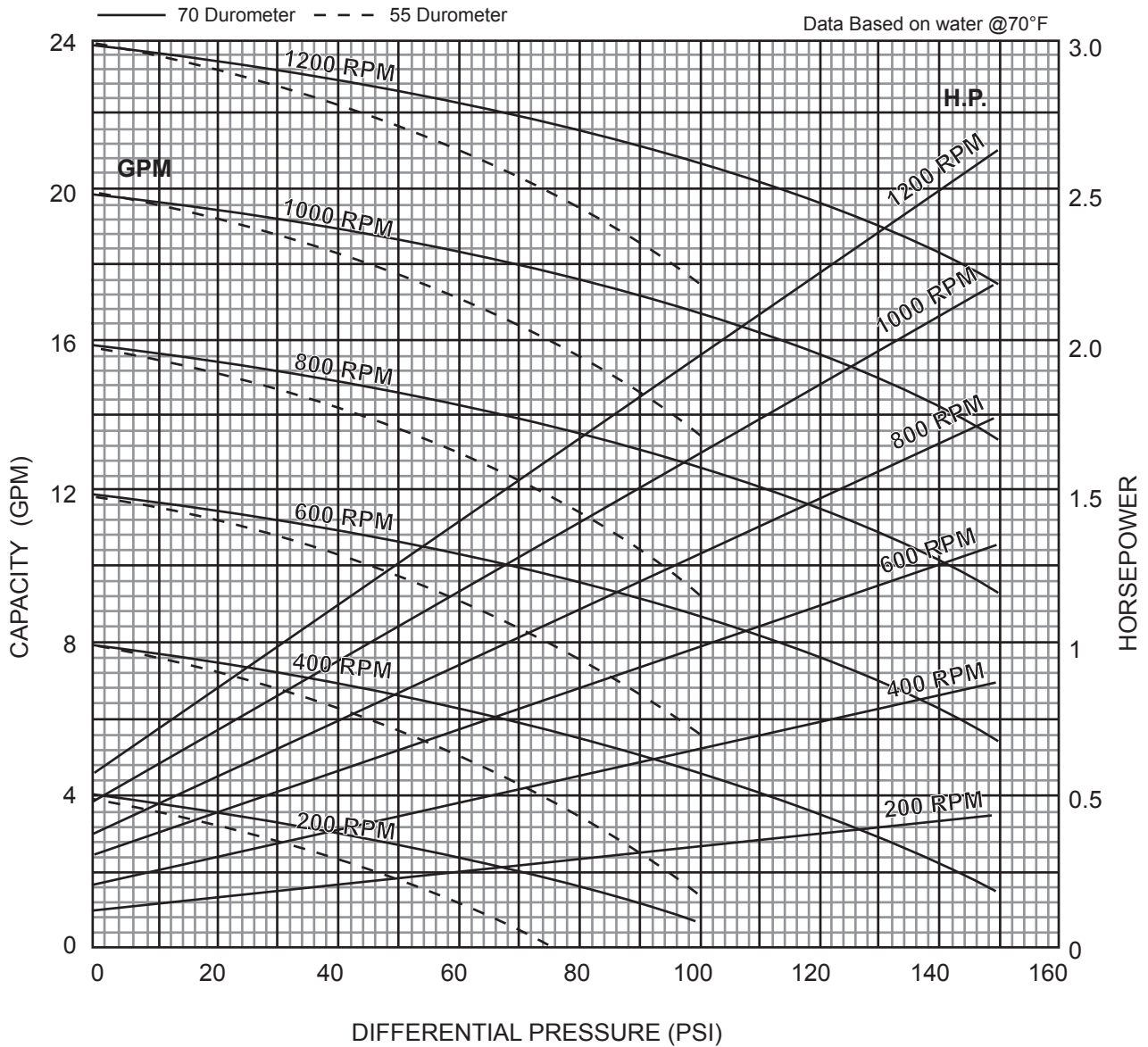


# JUSTICE SERIES - 2LJ4

Progressive Cavity Pump

Performance Curves

RPM	200	400	600	800	1000	1200
NPSH REQ'D	.9	1.7	2.6	3.4	4.8	6.7
MIN. HP	1/3	1/2	3/4	1	1-1/2	1-1/2



## 2 Stage Pump

[BACK TO TOP](#)

P: 847.640.7867 F: 847.640.7855  
2525 Clearbrook Drive Arlington Heights, IL 60005

[www.libertyprocess.com](http://www.libertyprocess.com)

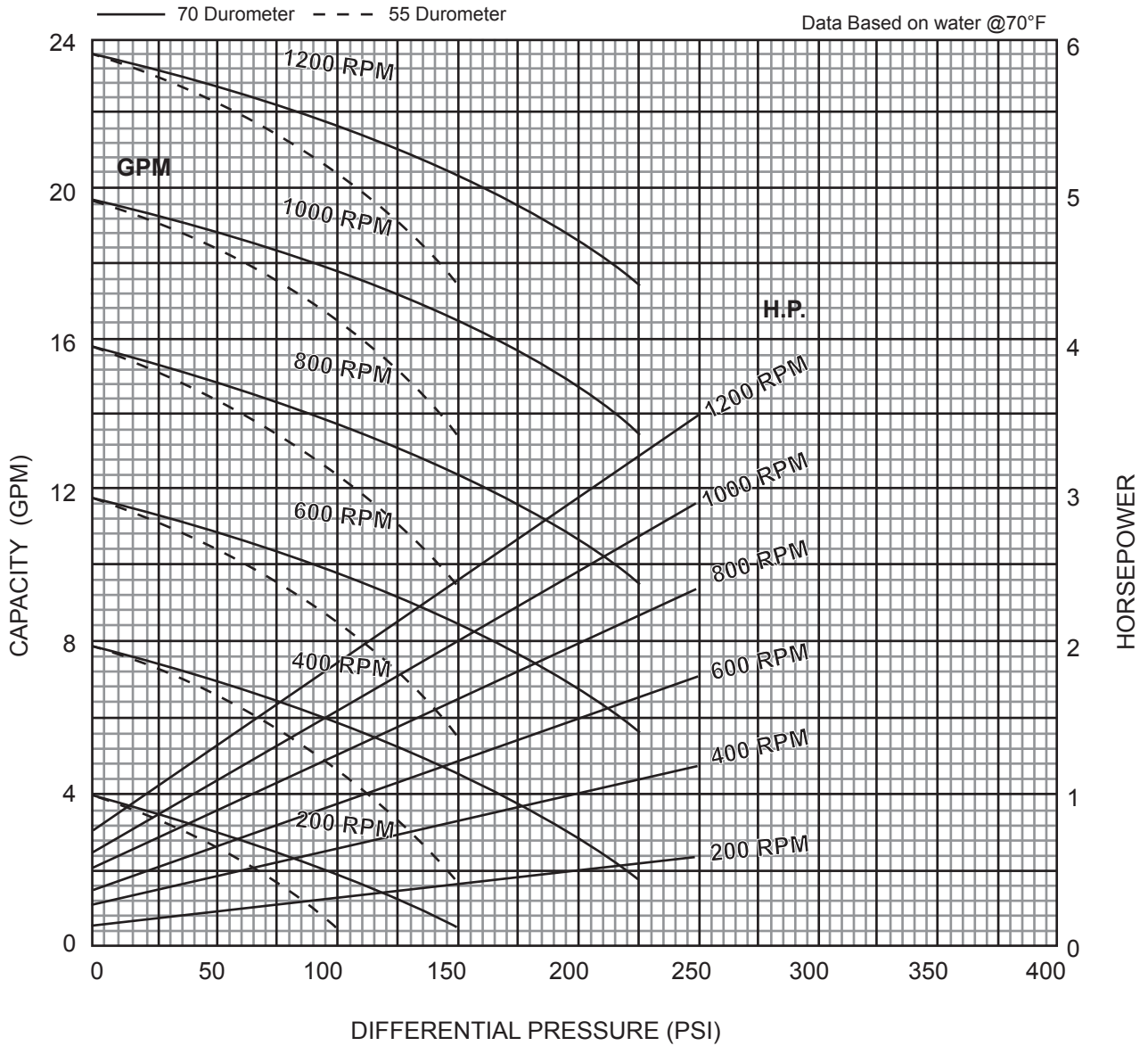


# JUSTICE SERIES - 3LJ4

Progressive Cavity Pump

Performance Curves

RPM	200	400	600	800	1000	1200
NPSH REQ'D	.9	1.7	2.6	3.4	4.8	6.7
MIN. HP	1/2	3/4	1	1-1/2	2	2



## 3 Stage Pump

BACK TO TOP

P: 847.640.7867 F: 847.640.7855  
2525 Clearbrook Drive Arlington Heights, IL 60005

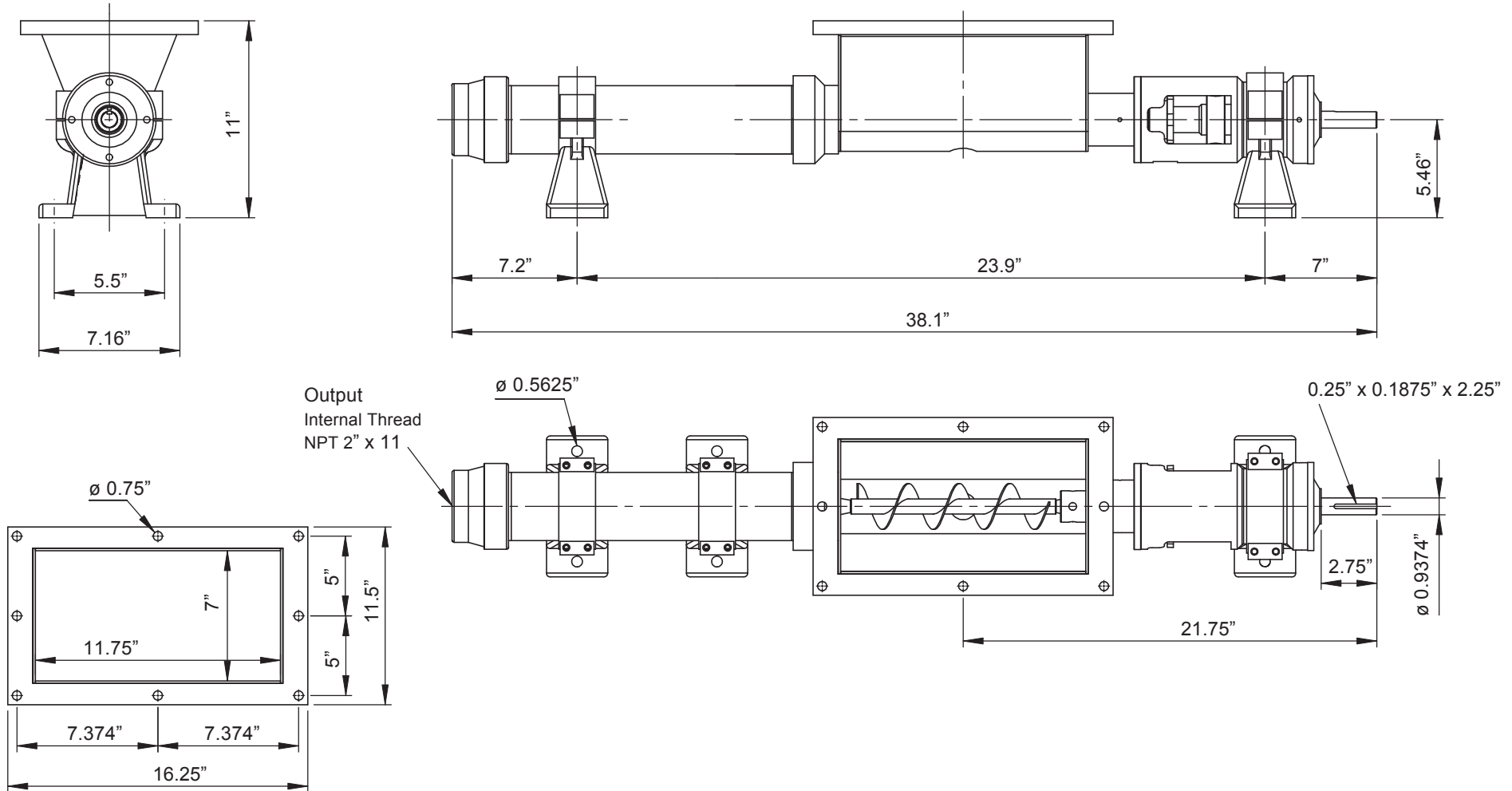
[www.libertyprocess.com](http://www.libertyprocess.com)



# JUSTICE SERIES - 1LJ4

Progressive Cavity Pump

Dimensional Drawings



[BACK TO TOP](#)

**1 Stage Pump**

Net weight

≈ lbs.

-

ALL DIMN: Inches

P: 847.640.7867 F: 847.640.7855  
2525 Clearbrook Drive Arlington Heights, IL 60005

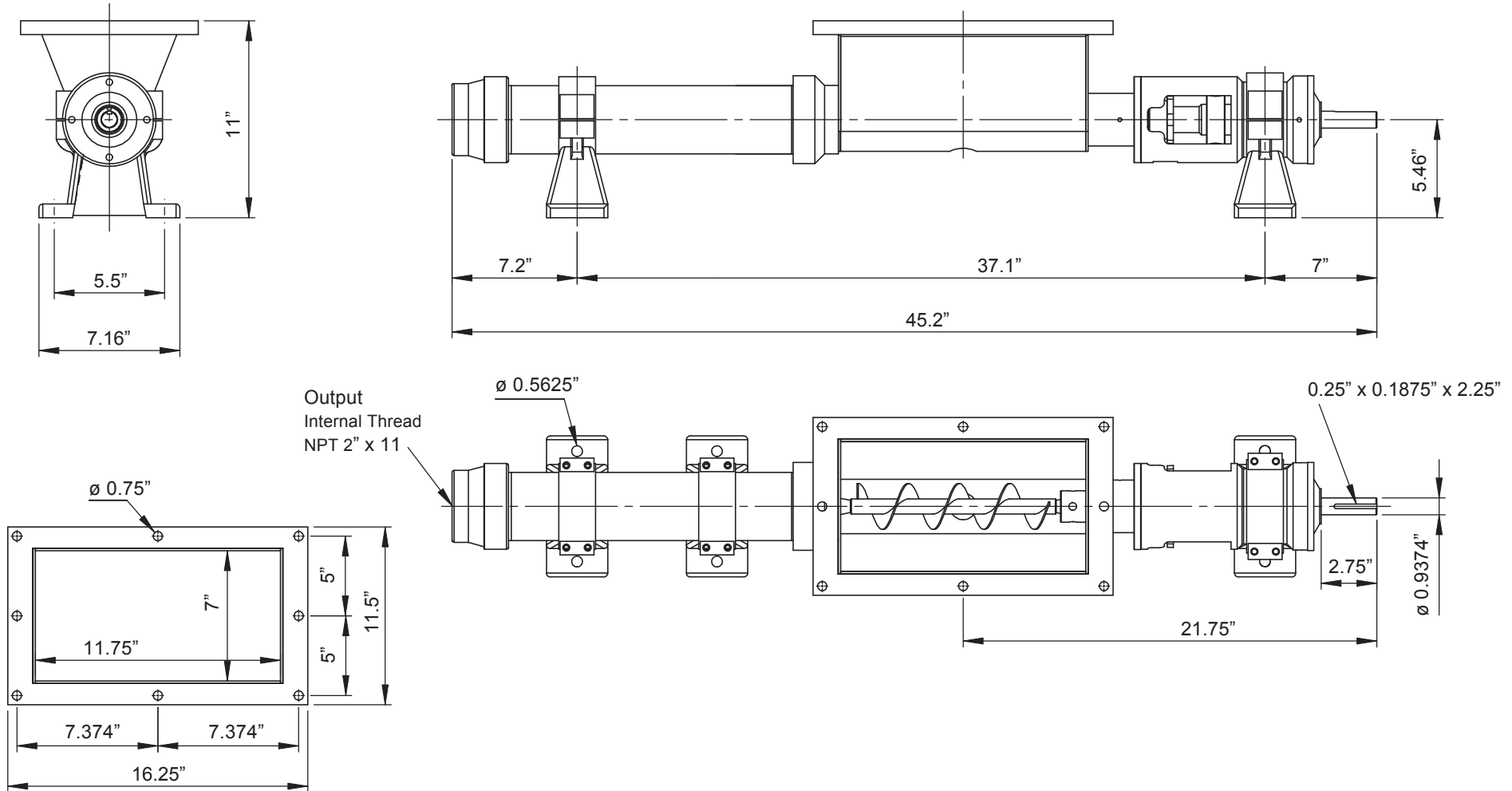
[www.libertyprocess.com](http://www.libertyprocess.com)



# JUSTICE SERIES - 2LJ4

Progressive Cavity Pump

Dimensional Drawings



[BACK TO TOP](#)

**2 Stage Pump**

Net weight

≈ lbs.

-

ALL DIMN: Inches

P: 847.640.7867 F: 847.640.7855  
2525 Clearbrook Drive Arlington Heights, IL 60005

[www.libertyprocess.com](http://www.libertyprocess.com)