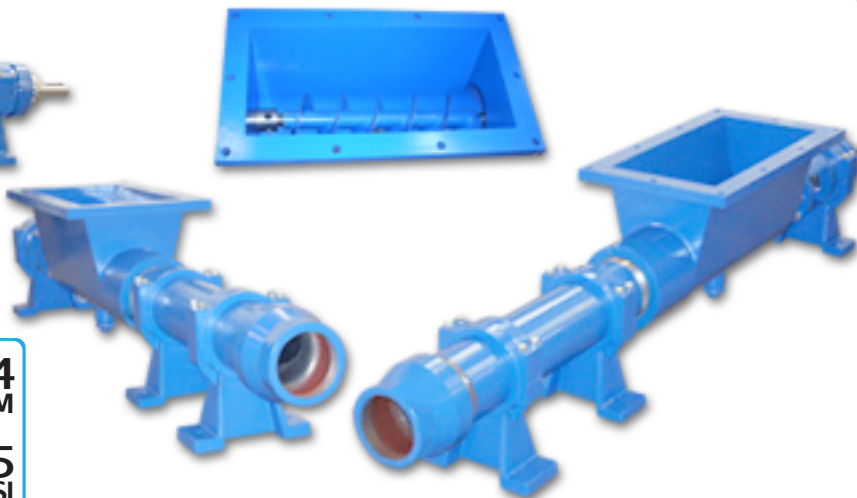


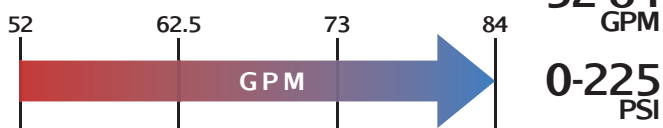


JUSTICE SERIES - LJ10

Progressive Cavity Hopper Pump



Justice LJ10



Features

- Large Hopper
- Welded Auger
- Hardened Joints
- Packing or Mechanical Seal
- 3-Stage Options
- Steel or Stainless Steel

Materials

Rotor: Tool or Stainless Steel - Chrome-Plated

Stator: Buna, Rubber, Viton™, EPDM

Motor: 5, 10, 15, and 20 hp

Inlet: 26" x 12"

Outlet: 5"

Bases: Steel and Stainless Steel

Pump Description

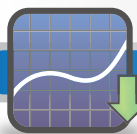
The Liberty Justice LJ10 Series Open Hopper Progressive Cavity Pump represents an ideal pumping solution for viscous solutions with high solids contents such as sewage and sewage sludge transfers at wastewater treatment facilities. Flow rates of 18.8 GPM/ per 100 Revolutions (52 GPM to 84 GPM) at 225 PSI are standard through the range of the series. The Justice Series offers a design of a heavy-duty auger mated to a rotor and stator for the most difficult pumping applications.

The large rectangular feed hopper design easily accommodates your pumping medium while the non-pulsating design of the product produces a low-shear flow that conveys your medium along effortlessly. Solids in suspension of up to 50% are accommodated by the Auger design.

The modular design of the Justice LJ10 Series Open Hopper Progressive Cavity pump is a hardened pinned-joint drive assembly with a body available in steel or 316 stainless steel and internal wetted components in either stainless steel or hardened tool steel with hard chrome plating for long-life and durability in abrasive pumping applications.

Rotors and Stators for the Justice LJ10 Series are available in 1, 2, and 3 stages for applications with 75, 150, and 225 PSI discharge pressures with stators available in Buna Nitrile, Viton™, EPDM and Natural Rubber. The standard seal design is a set of packing with a lantern ring and flush connections. Mechanical Seal options are readily available.

Contact a Liberty Process representative today for more information about the Justice Series



Curves

[Click Links Below](#)

1-Stage
1LJ10

2-Stage
2LJ10

3-Stage
3LJ10

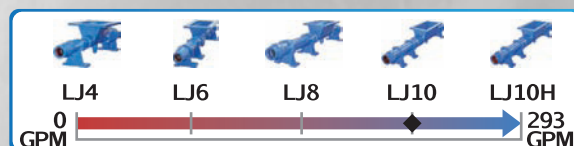


Drawings

[Click Links Below](#)

1-Stage
1LJ10

2-Stage
2LJ10



P: 847.640.7867 F: 847.640.7855
2525 Clearbrook Drive Arlington Heights, IL 60005

www.libertyprocess.com

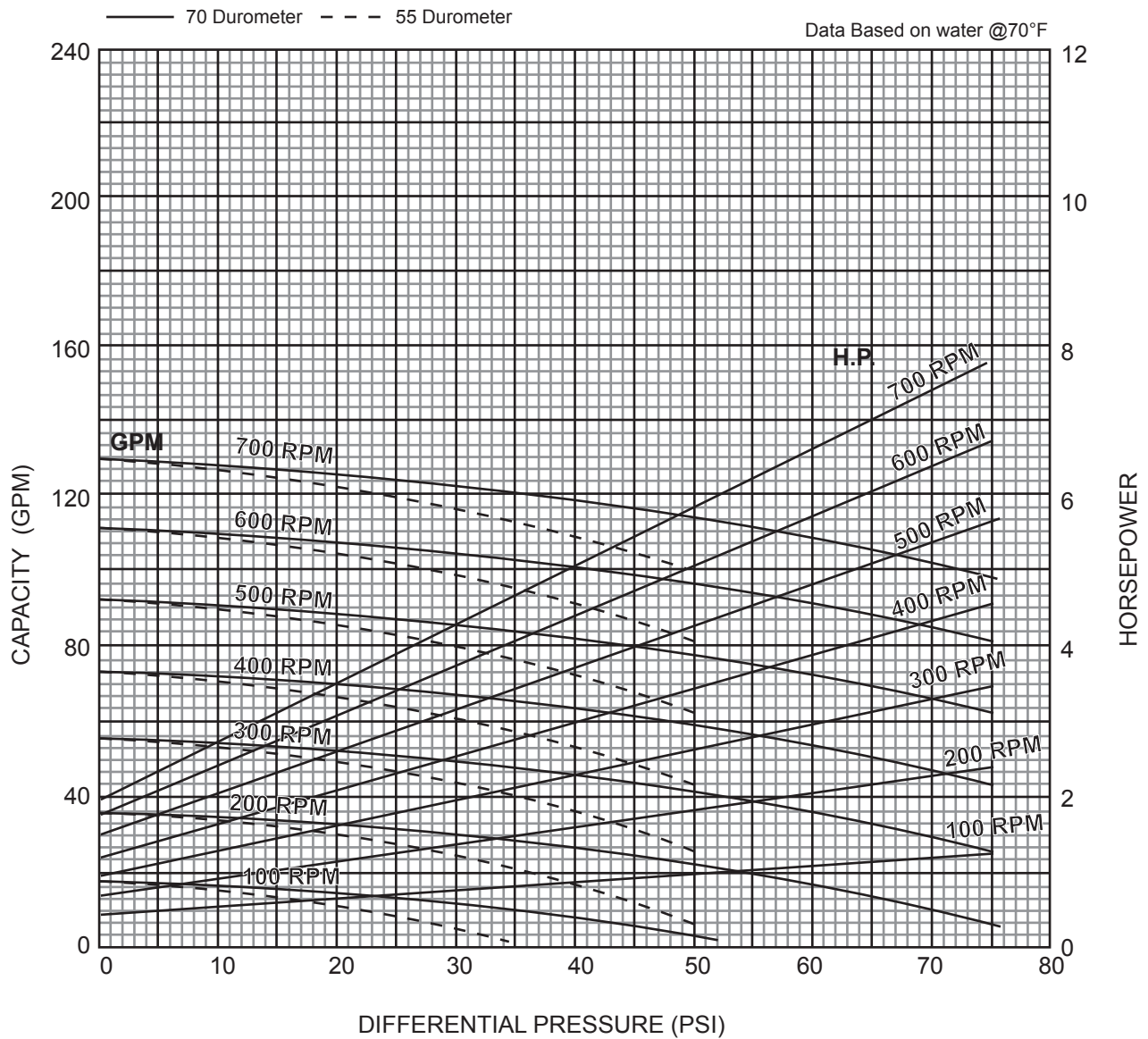


JUSTICE SERIES - 1LJ10

Progressive Cavity Pump

Performance Curves

RPM	100	200	300	400	500	600	700
NPSH REQ'D	.9	1.7	2.6	3.5	4.9	6.9	9.1
MIN. HP	1	1-1/2	2	3	5	5	5



1 Stage Pump

[BACK TO TOP](#)

P: 847.640.7867 F: 847.640.7855
2525 Clearbrook Drive Arlington Heights, IL 60005

www.libertyprocess.com

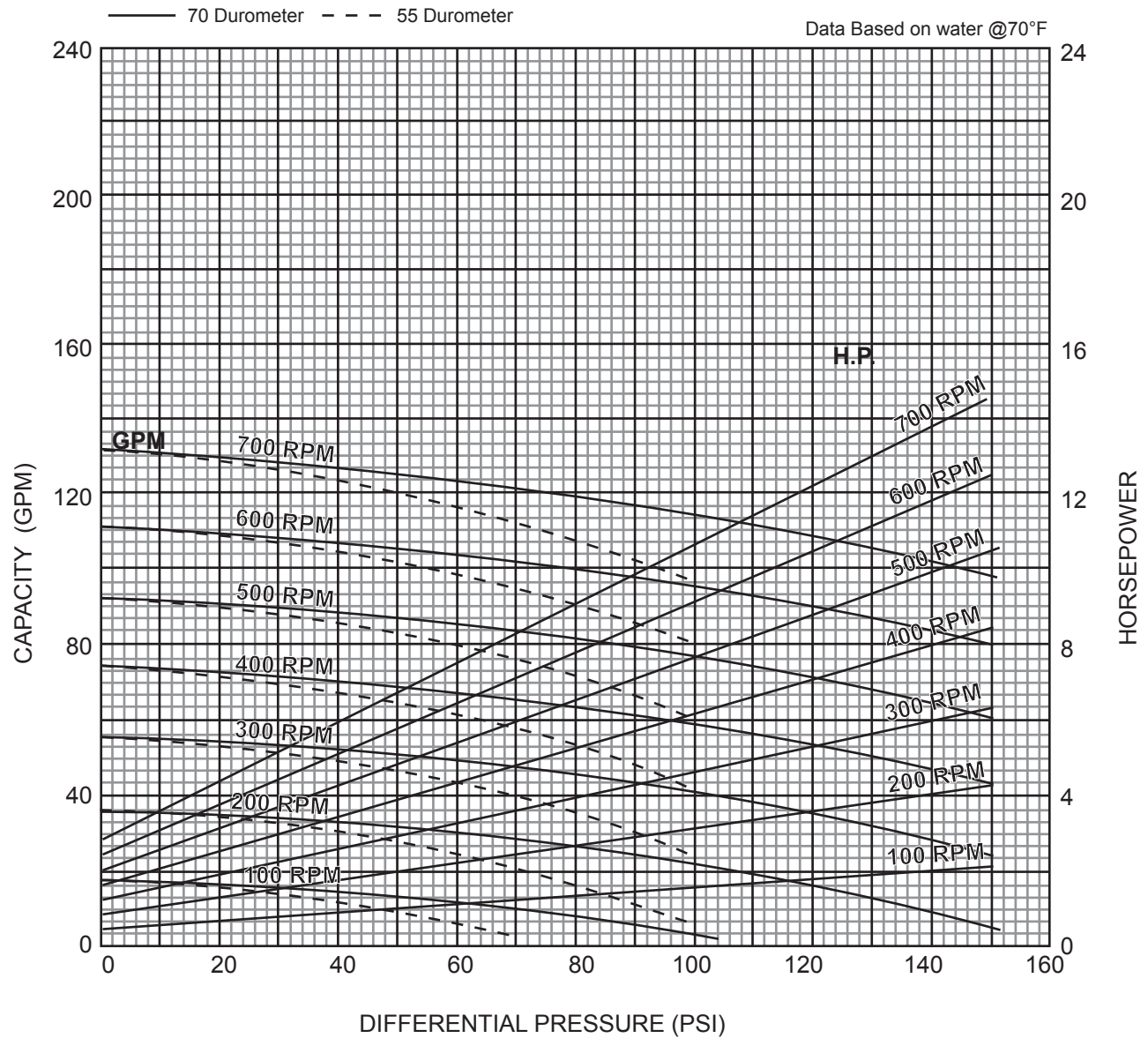


JUSTICE SERIES - 2LJ10

Progressive Cavity Pump

Performance Curves

RPM	100	200	300	400	500	600	700
NPSH REQ'D	.9	1.7	2.6	3.5	4.9	6.9	9.1
MIN. HP	1-1/2	2	3	5	7-1/2	7-1/2	10



2 Stage Pump

[BACK TO TOP](#)

P: 847.640.7867 F: 847.640.7855
2525 Clearbrook Drive Arlington Heights, IL 60005

www.libertyprocess.com

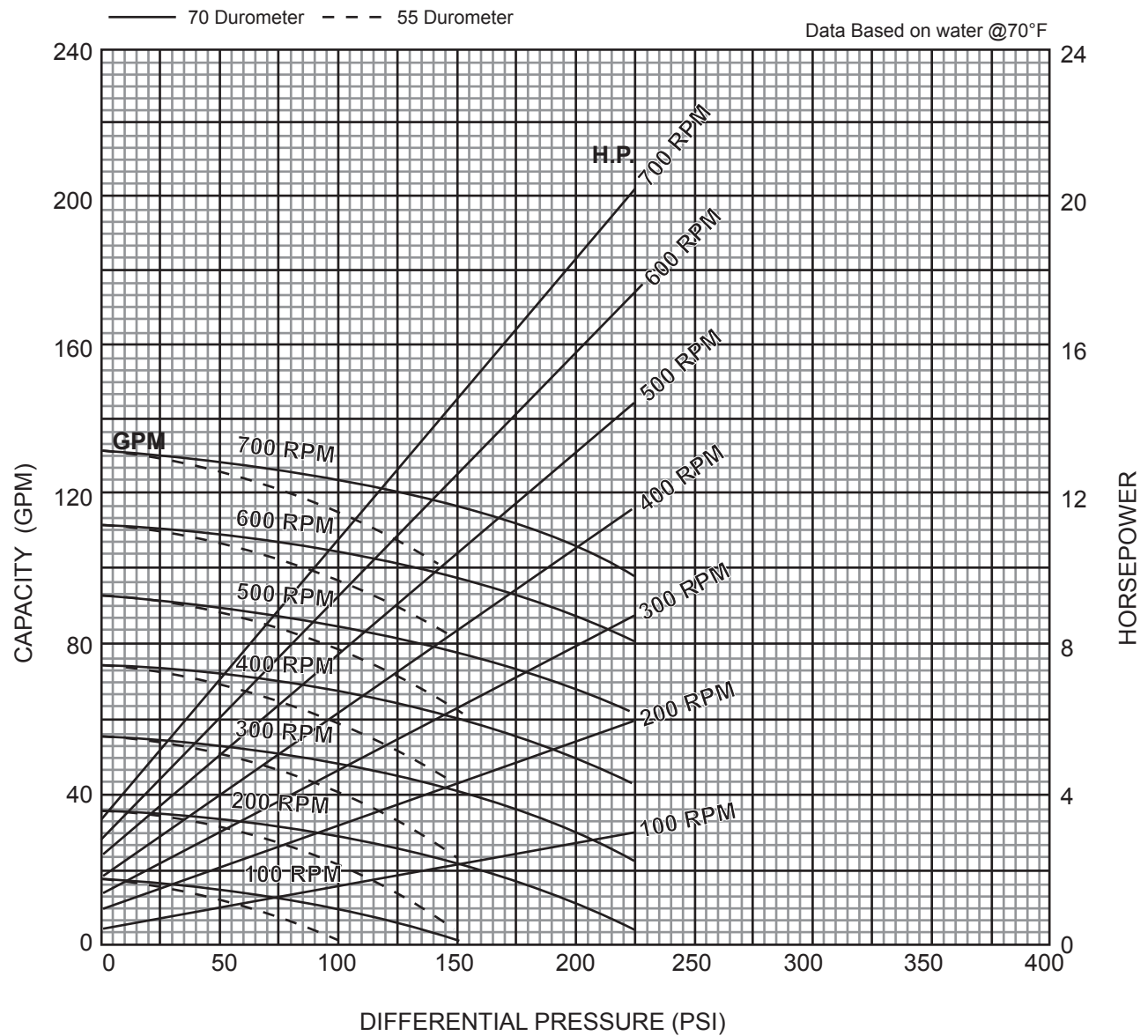


JUSTICE SERIES - 3LJ10

Progressive Cavity Pump

Performance Curves

RPM	100	200	300	400	500	600	700
NPSH REQ'D	.9	1.7	2.6	3.5	4.9	6.9	9.1
MIN. HP	2	3	5	7-1/2	10	10	15



3 Stage Pump

[BACK TO TOP](#)

P: 847.640.7867 F: 847.640.7855
2525 Clearbrook Drive Arlington Heights, IL 60005

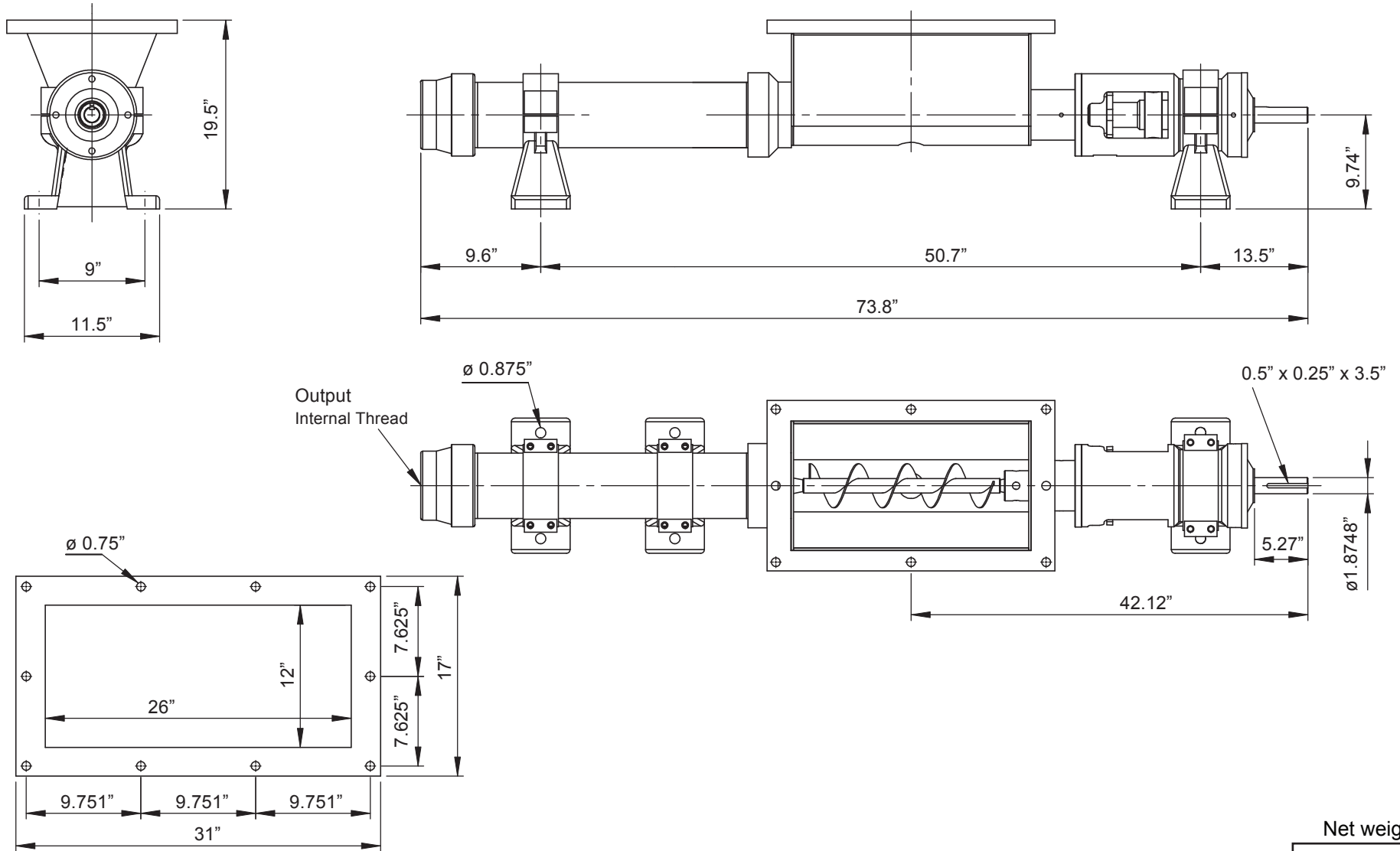
www.libertyprocess.com



JUSTICE SERIES - 1LJ10

Progressive Cavity Pump

Dimensional Drawings



[BACK TO TOP](#)

1 Stage Pump

Net weight

≈ lbs.

-

ALL DIMN: Inches

P: 847.640.7867 F: 847.640.7855
2525 Clearbrook Drive Arlington Heights, IL 60005

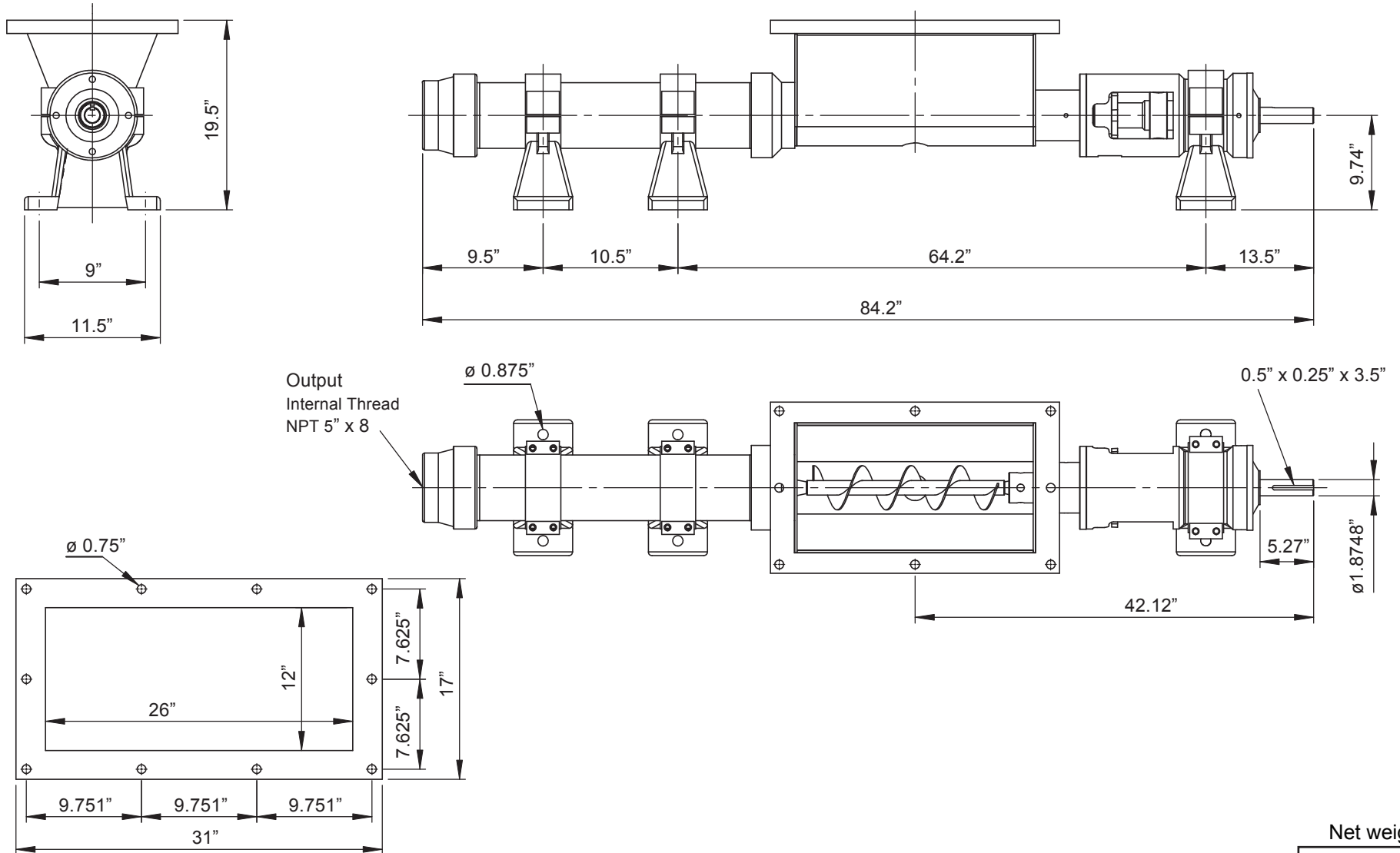
www.libertyprocess.com



JUSTICE SERIES - 2LJ10

Progressive Cavity Pump

Dimensional Drawings



[BACK TO TOP](#)

2 Stage Pump

Net weight
≈ lbs.
-

ALL DIMN: Inches

P: 847.640.7867 F: 847.640.7855
2525 Clearbrook Drive Arlington Heights, IL 60005

www.libertyprocess.com