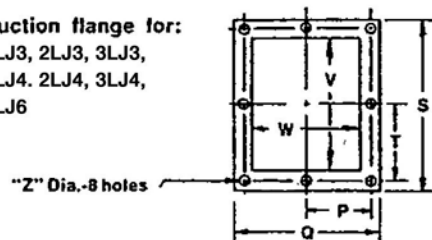
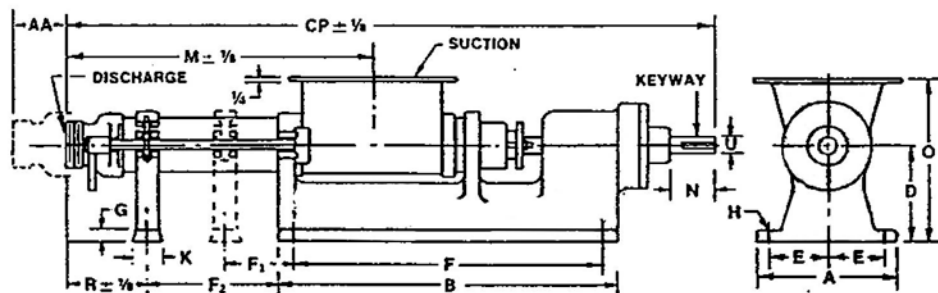
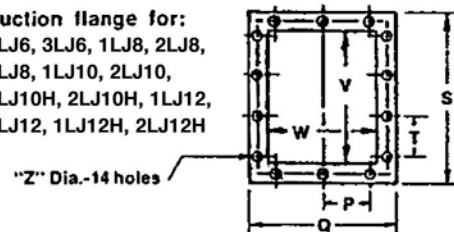


# Type LJ

Suction flange for:  
1LJ3, 2LJ3, 3LJ3,  
1LJ4, 2LJ4, 3LJ4,  
1LJ6



Suction flange for:  
2LJ6, 3LJ6, 1LJ8, 2LJ8,  
3LJ8, 1LJ10, 2LJ10,  
1LJ10H, 2LJ10H, 1LJ12,  
2LJ12, 1LJ12H, 2LJ12H



Pump	AA	A	B	CP	D	E	F	F2	G	H	K	M	N	O	P	Q	R	S	T	U	V	W	Z	Key	Disc	LBS.
1LJ4	4 7/8	6 1/4	15 1/2	32 9/16	4 1/8	2 1/2	14	5	1/2	7/16	2	15 3/4	3	7 7/8	2 3/4	6 1/2	7 1/16	9 1/2	4 1/2	15/16	7	4	7/16	1/4 1/8	2	52
1LJ6	6 5/8	8 1/2	19	41	6 1/4	3 1/2	17	7	5/8	11/16	2 1/2	19 5/16	4 3/8	10 3/4	3 3/4	8 1/2	8	10 1/2	4 3/4	1 1/8	8	6	3/16	1/4 1/8	2 1/2	117
1LJ8	5/88	11	26 1/2	54 3/8	8	4 1/2	24	11	3/4	13/16	3	24 1/8	4 1/2	13 3/4	3 1/2	11 1/2	8 1/2	15 1/2	3 3/4	1 3/8	12	8	9/16	3/8 3/16	4	273
1LJ10	10 1/4	11	29 1/4	60 5/16	9 3/4	4 1/2	26 1/4	12	1 1/8	13/16	3	27 7/8	5	15 1/2	4	12 1/2	10 9/16	16 1/2	4	1 7/8	13	9	9/16	1/2x 1/4	4	535
1LJ10H	10 1/4	11	29 1/4	60 9/16	9 3/4	4 1/2	26 1/4	12	1 1/8	13/16	3	28 1/8	5	15 1/2	4	12 1/2	10 16/16	16 1/2	4	1 7/8	13	9	9/16	1/2 1/4	4	535